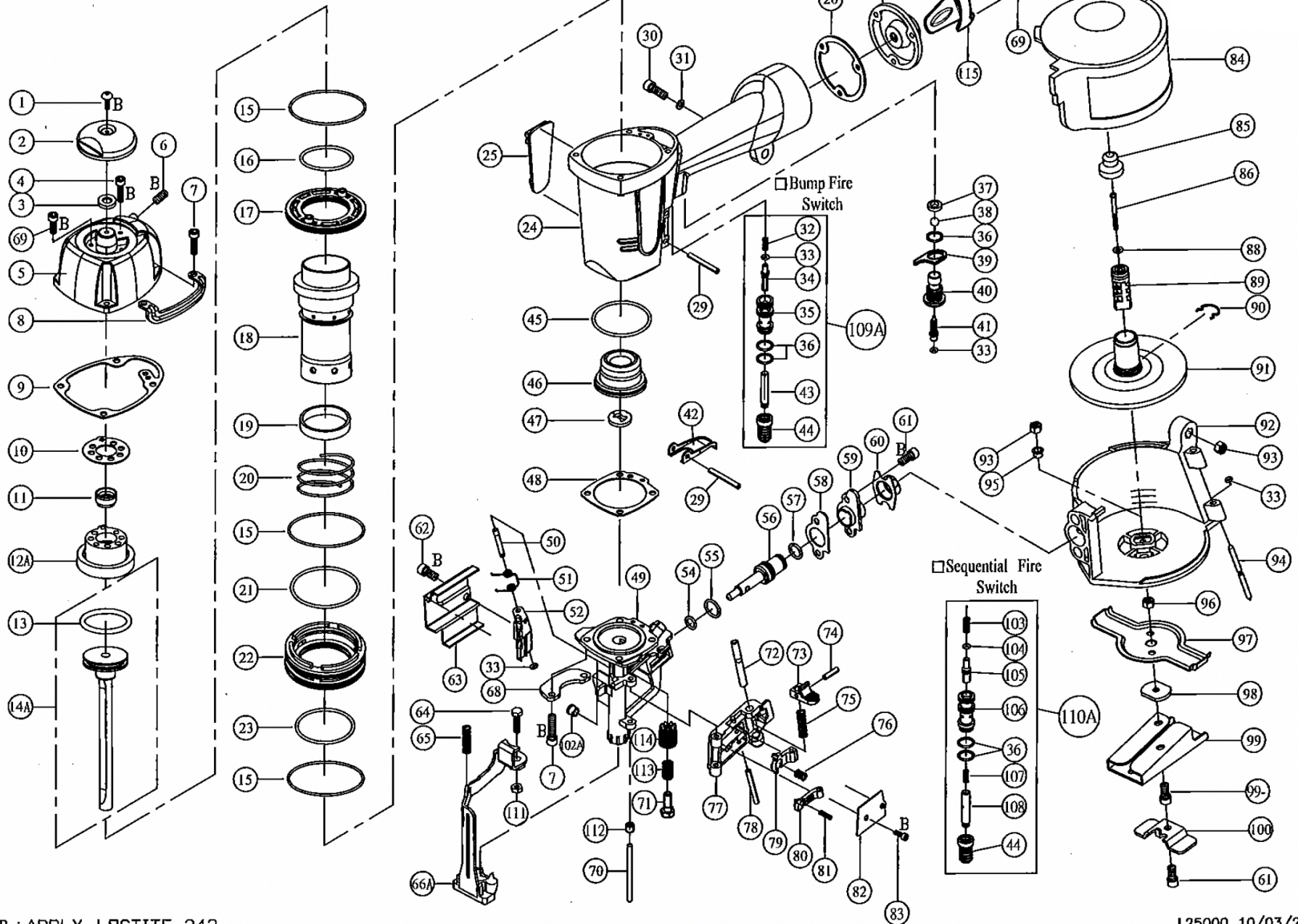


MODEL RN-45E2



*B : APPLY LOCTITE 242

L25000 10/03/2014

PARTS LIST (RN-45E2)

ITEM	PART NO	DESCRIPTION	QTY		ITEM	PART NO	DESCRIPTION	QTY		ITEM	PART NO	DESCRIPTION	QTY
001	US05080B-10	UM.HD.BOLT	1		035	25003501	TRIGGER VALVE	1		071	HH06100B-18	HEXAGONAL BOLT	1
002	25000201	EXHAUST COVER	1		036	OR11515N	O RING	3		072	25007201	LOCK SHAFT	1
003	15300401	PU RING	1		037	25003701	SEAL	1		073	25007301	GUIDE LOCK	1
004	HS05080BW-25	HEX.SOC.HD.BOLT+SW	1		038	25003801	VALVE BALL	1		074	RP3012S	ROLLED PIN	1
005	25000501	CAP	1		039	25003901	VALVE PLATE	1		075	25007501	COMPRESSION SPRING	1
006	SS05080B-06	SET SCREW	1		040	25004001	TRIGGER VALVE CAP	1		076	25007601	COMPRESSION SPRING	1
007	HS05080BW-20	HEX.SOC.HD.BOLT+SW	8		041	25004101	PLUNGER	1		077	25007702	DOOR	1
008	25000801	PROTECTOR	2		042	25004201	TRIGGER	1		078	RP3028S	ROLLED PIN	1
009	25000902	CAP SEAL	1		043	25004301	PLUNGER(A)	1		079	25007901	CHECK PAWL(A)	1
010	25001002	GASKET**	1		044	25004401	VALVE RUBBER COVER	1		080	25008001	CHECK PAWL(B)	1
011	25001101	EXHAUST VALVE	1		045	OR43824M	O RING	1		081	25008101	COMPRESSION SPRING	1
012A	25001201A	STOPPER	1		046	25004601	BUMPER	1		082	25008201	DOOR COVER	1
013	OR30735M	O RING	1		047	25004701	SHEET	1		083	HS04070BW-06	HEX.SOC.HD.BOLT+SW	2
014A	25001401A	DRIVER ASSEMBLY**	1		048	25004801	NOSE SEAL	1		084	25008401	MAGAZINE COVER	1
015	OR64520N	O RING	3		049	25004901	NOSE	1		085	25008501	HOLDER CAP	1
016	OR41924M	O RING	1		050	25005001	STEP PIN	1		086	CH04070B-50	CAP.HD.SCREW	1
017	25001701	CYLINDER PLATE	1		051	25005101	TORSTON SPRING	1		088	FW040080B-05	FLAT WASHER	1
018	25001801	CYLINDER	1		052	25005201	FEED PAWL	1		089	25008901	MAGAZINE POST	1
019	25001901	CYLINDER SEAL	1		054	OR08819N	O RING**	1		090	25009001	RATCHET SPRING	1
020	25002001	CYLINDER SPRING	1		055	OR13819M	O RING	1		091	25009101	NAIL SUPPORT UNIT	1
021	OR56224M	O RING	1		056	25005601	FEED PISTON	1		092	25009201	MAGAZINE	1
022	25002201	CYLINDER RING	1		057	OR11019M	O RING	1		093	LN0500N	LOCK NUT	3
023	OR47224M	O RING	1		058	25005802	FEED PISTON SEAL	1		094	25009401	STEP PIN	1
024	25002401	BODY	1		059	25005901	FEED PISTON COVER	1		095	25009501	SLEEVE	2
025	25002501	PLASTIC LABEL	2		060	25006001	MAGAZINE BUSHING	1		096	LN0400N	LOCK NUT	1
026	15107001	GASKET	1		061	HS05080BW-10	HEX.SOC.HD.BOLT+SW	3		097	25009701	MAGAZINE GUARD	1
027	15107101	END CAP	1		062	HS05080BW-08	HEX.SOC.HD.BOLT+SW	2		098	25009801	PLATE	1
028	12106401	AIR PLUG	1		063	25006301	GUARD	1		099	25009901	GUIDE BASE	1
029	RP3030S	ROLLED PIN	2		064	25006401	HEXAGONAL BOLT	1		099-1	HS05080B-14	HEX.SOC.HD.BOLT	2
030	HS05080B-22	HEX.SOC.HD.BOLT	1		065	25006501	COMPRESSION SPRING	1		100	25010001	SHINGLE GUIDE	1
031	FW050120B-10	FLAT WASHER	1		066A	25006602A	CONTACT ARM UNIT	1		102A	25010201A	MAGNET ASSEMBLY	1
032	25003201	SPRING	1		068	25006801	PROTECTOR	2		103	25010301	PLUNGER SPRING (S)	1
033	OR02819N	O RING**	4		069	HS05080BW-16	HEX.SOC.HD.BOLT+SW	4		104	OR04020N	O RING**	1
034	25003401	PLUNGER(B)	1		070	25007002	STRAIGHT PIN	1		105	25010501	PLUNGER (S)	1

